

Pierre Yovanovitch Designs Chic NYC Apartment for The Invisible Collection Co-founder Anna Zaoui



A pair of ceramic tables by [Armelle Benoit](#) for Pierre Yovanovitch, and a custom-made wooden daybed by [Rasmus Fenhann](#), make up the living room, where views “are like artworks on the walls.” Photography by Stephen Kent Johnson.

When a world-renowned interior designer creates a home for the woman who co-founded the first online, curated platform for made-to-order pieces by top designers, it feels a bit like the stars have aligned. Designed by [Pierre Yovanovitch](#) for [The Invisible Collection](#) co-founder, Anna Zaoui, this three-bedroom New York City apartment is peppered with art pieces that Zaoui has bought at art galleries and auctions, and furniture pieces by Yovanovitch, like his iconic Papa Bear armchairs.



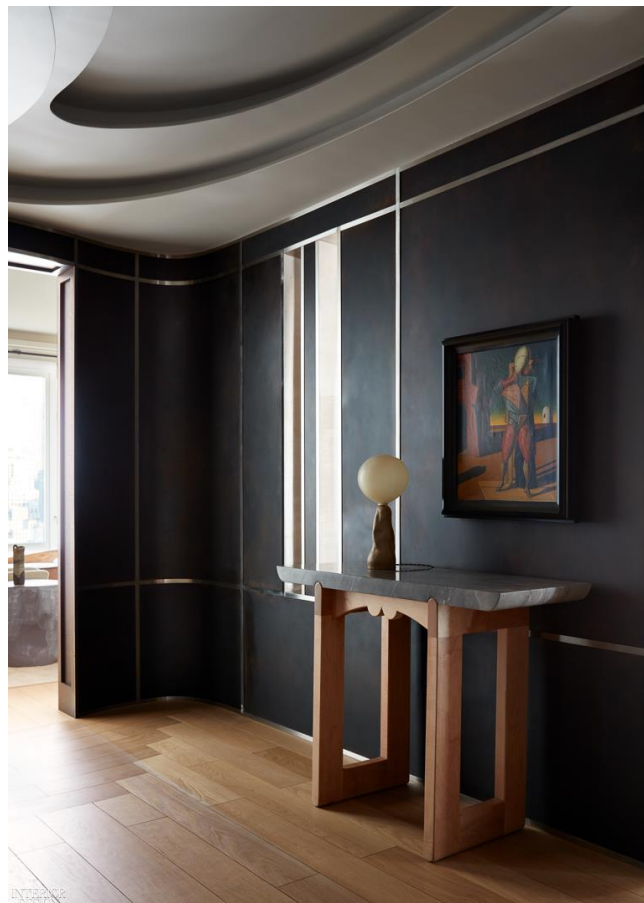
INTERIOR
DESIGN

In the master bedroom, Yovanovitch's iconic Papa Bear armchairs are paired with a set of three occasional tables in wood and lacquer, also by Yovanovitch, and a striking artwork by [Marc Quinn](#) depicting Anna Zaoui's own iris. Photography by Stephen Kent Johnson.

The art and furniture are front and center—[Eduardo Olbés](#)' Macho Ming console table and Marc Quinn's striking artwork depicting Zaoui's iris inject color and personality into the apartment. But the home boasts another asset: commanding views over Central Park. "The surrounding city views are like artworks on the walls," says Yovanovitch. "The whole design of the space is centered around these astonishing views." Clean lines, neutral colors, solid oak floors and brushed metal walls make up the interior, where city views can be enjoyed from many angles. "The plan worked really well," says Zaoui. "Now, it is indeed difficult to leave the apartment..."



Yovanovitch's E.T lamp, made of ceramic and handblown glass, Eduardo Olbés's Macho Ming console table and Giorgio De Chirico's painting *Il Trovatore* form a perfect trio in the apartment's entrance. Photography by Stephen Kent Johnson.



The entrance features curved recesses in the ceiling, brushed black metal panels on the walls and solid oak flooring. Photography by Stephen Kent Johnson.



The dining room boasts a lacquered table and a cluster of pendant lights made of free-hand blown glass by [Jeremy Maxwell Wintrebert](#). Photography by Stephen Kent Johnson.



In the living room, Yovanovitch has designed a cream-colored upholstered sofa and rug, which contrasts with a pair of foot lamps by [Marc Raimbault](#), and a 1950 dresser by Philip & Kelvin Laverne. Photography by Stephen Kent Johnson.